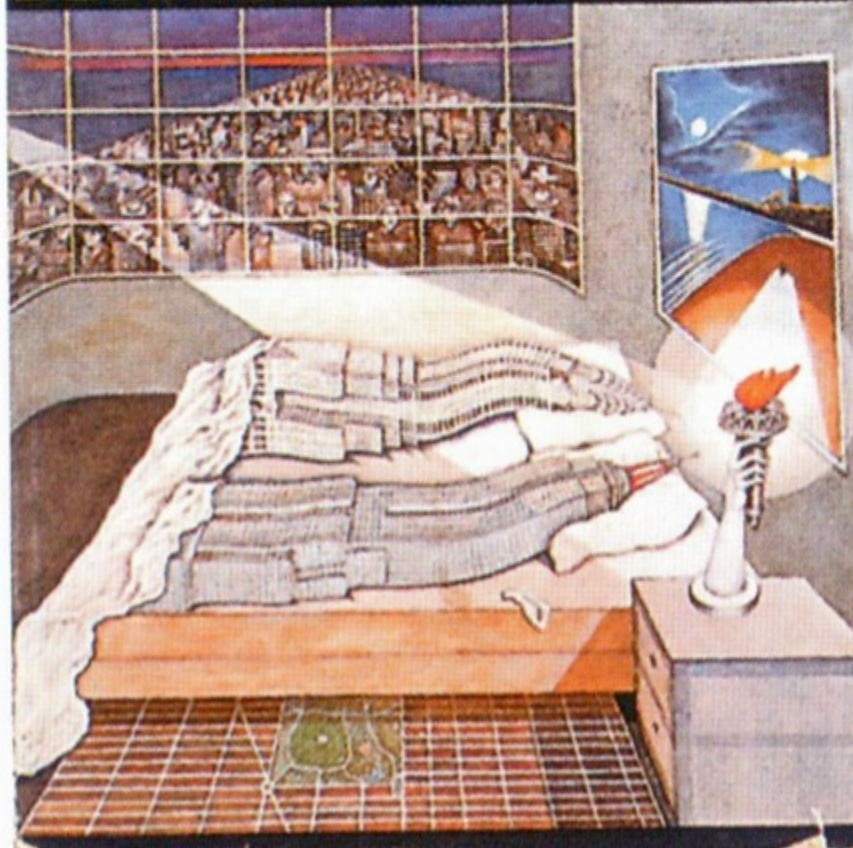


DELIRIOUS NEW YORK
un manifesto retroattivo per Manhattan
Rem Koolhaas, 1978

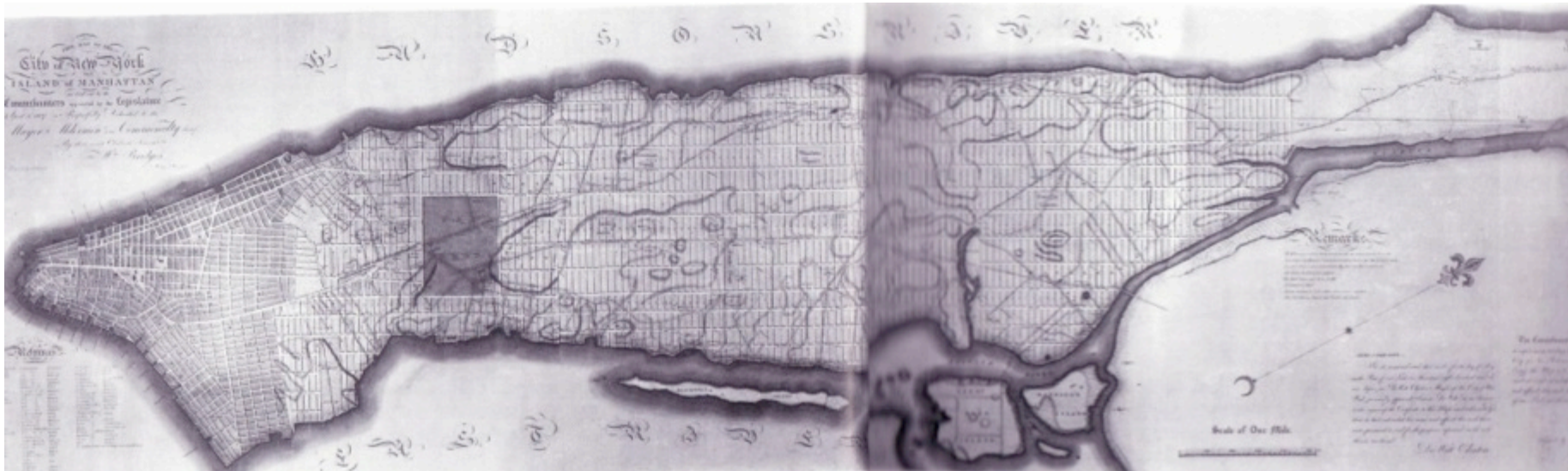
Peter Koolhaas

DELIRIOUS NEW YORK





Jollain
veduta a volo d'uccello di New Amsterdam, 1672



**Proposta della Commissione per la Griglia di Manhattan
1811**



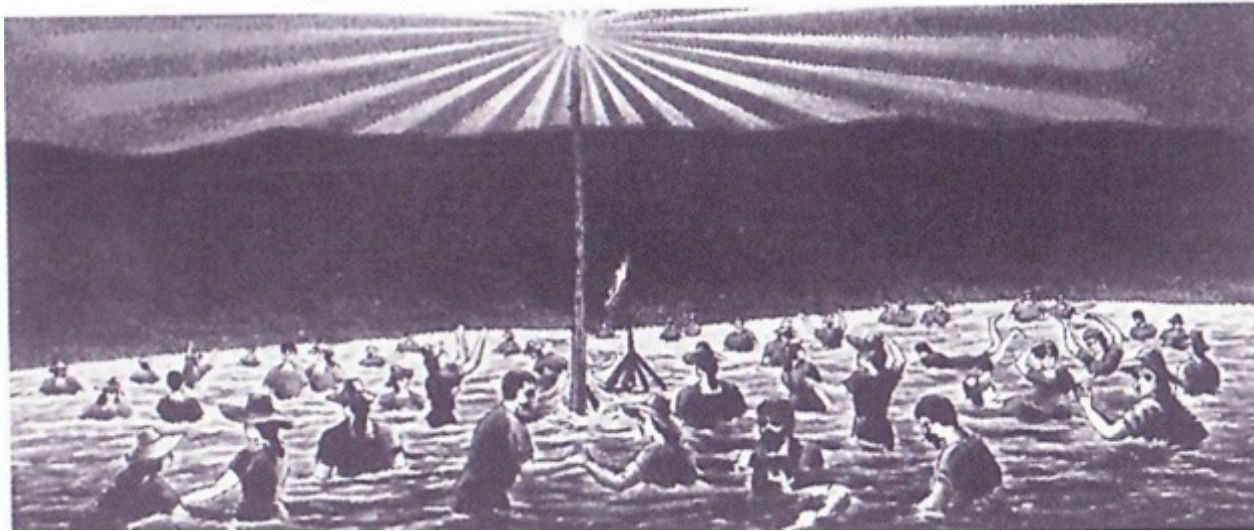
Latting Observatory

**Esposizione Mondiale di New York
1853**

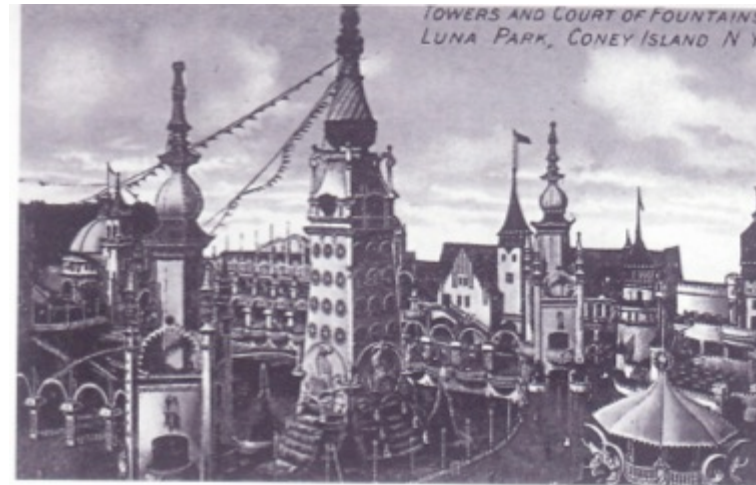




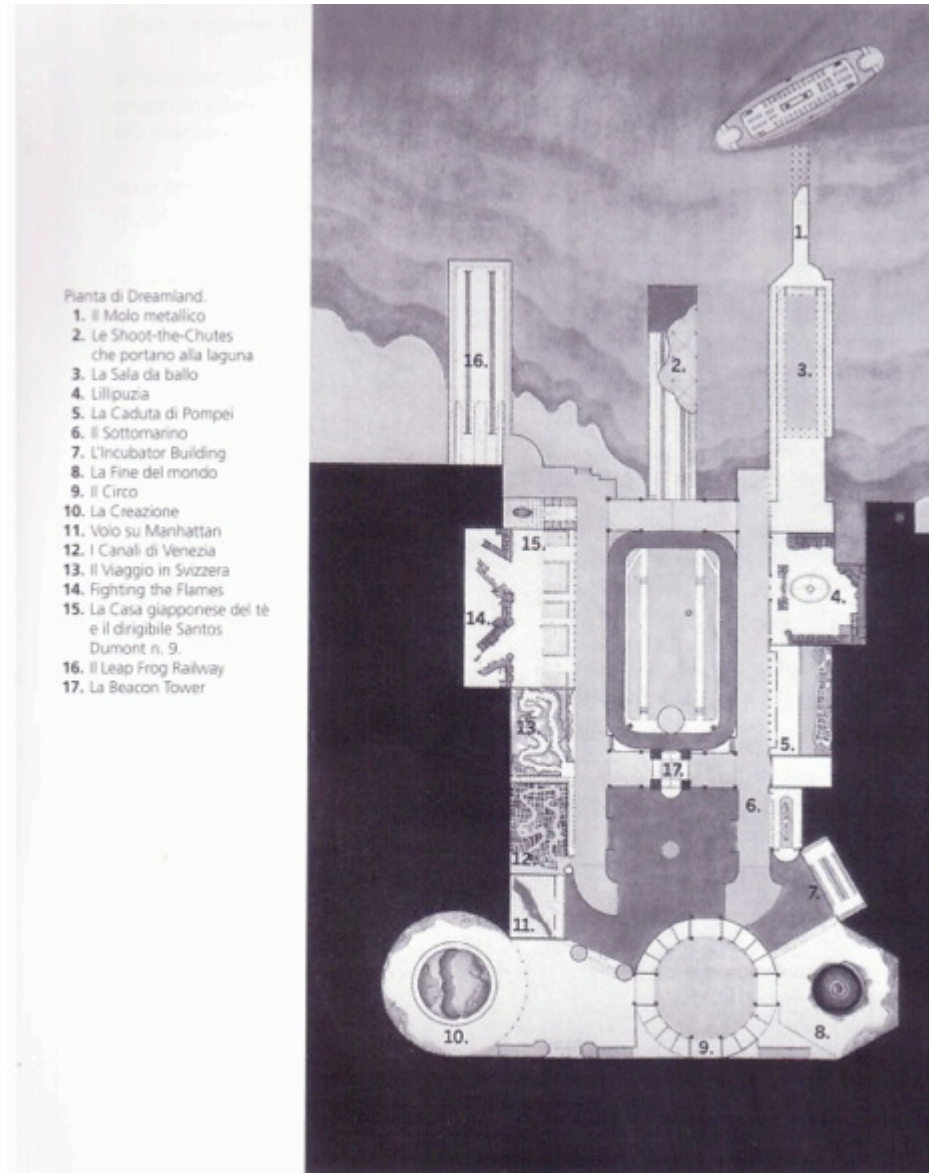
Coney Island
la tecnologia del fantastico



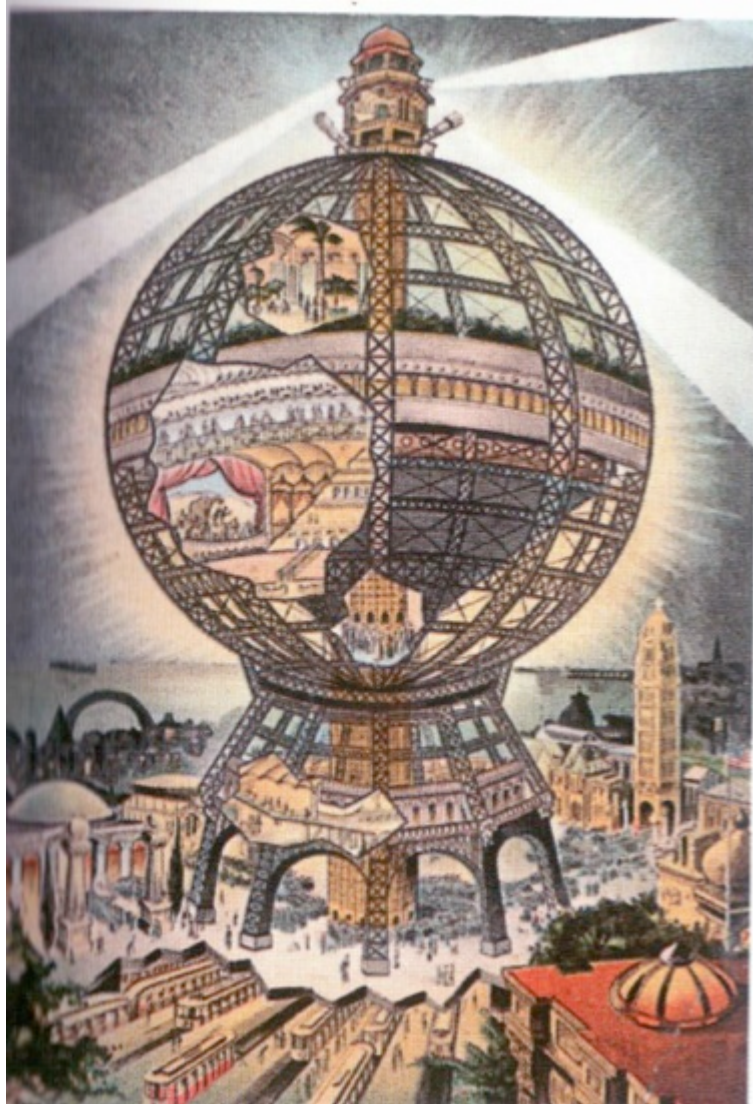
**Bagno elettrico, 1890
Coney Island**



**Luna Park, skyline diurno e notturno
Coney Island**



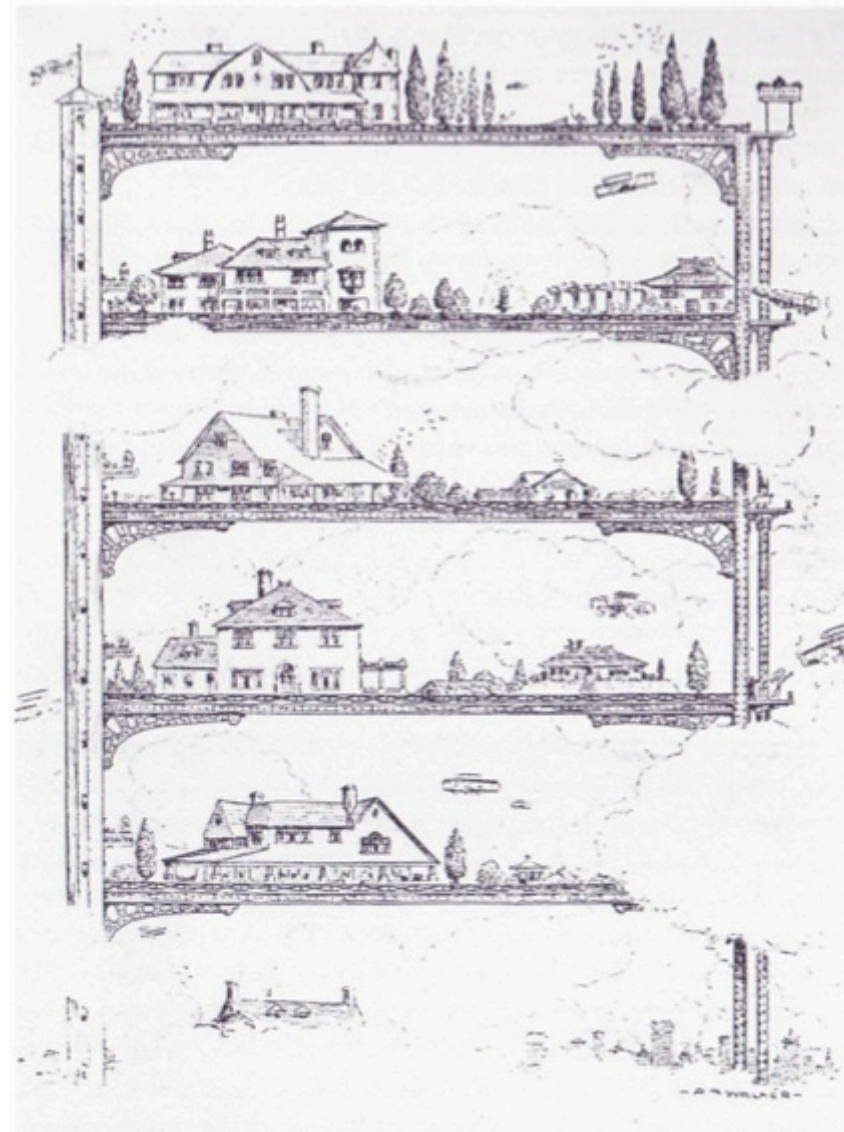
**Dreamland
Coney Island**



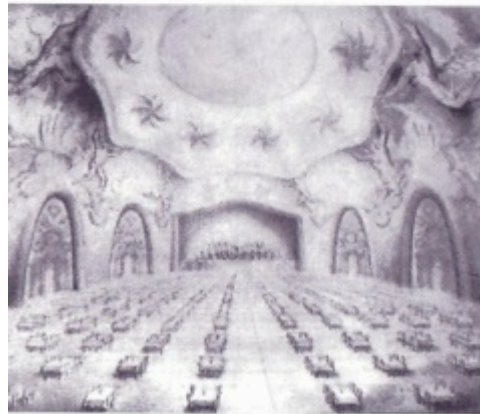
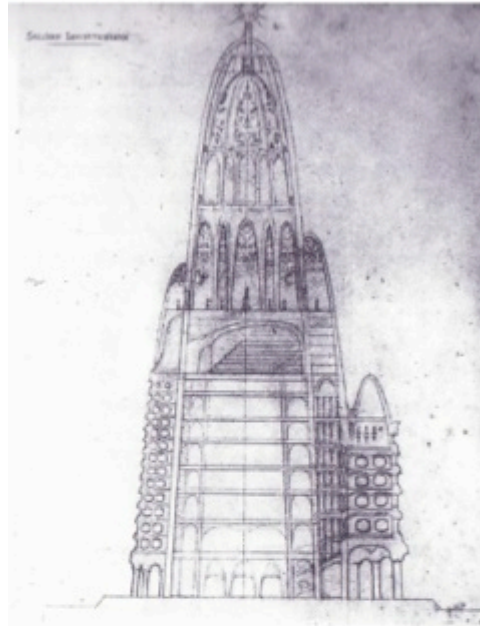
**Globe Tower
1906**

WORK ON THE FRIEDE
HAS GLOBE
BEGUN TOWER





**Teorema
1909**

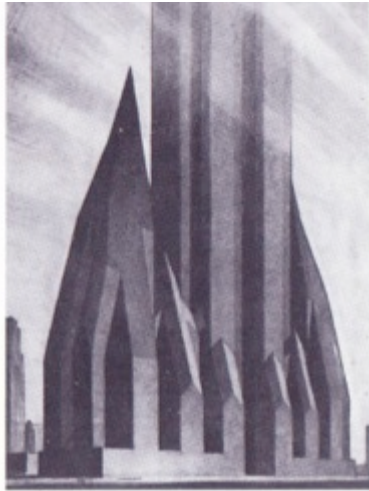
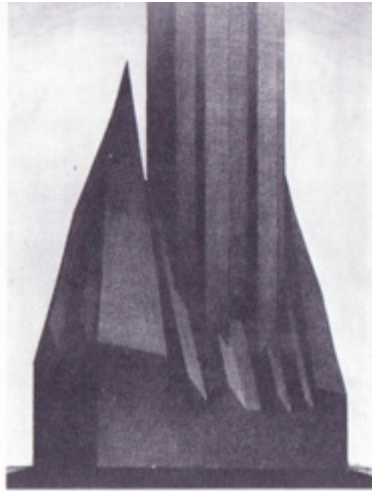


dana reana esterna attraverso un rivestimento di camere da letto. Come nel teorema del 1909, i piani centrali vengono sovrapposti l'uno all'altro come strati tematici autosufficienti in una sequenza essenzialmente casuale. Per mezzo di questa sconnessione verticale, i cambiamenti d'iconografia, funzione e destinazione d'uso possono essere compiuti senza che ciò abbia alcun impatto sull'intera struttura.

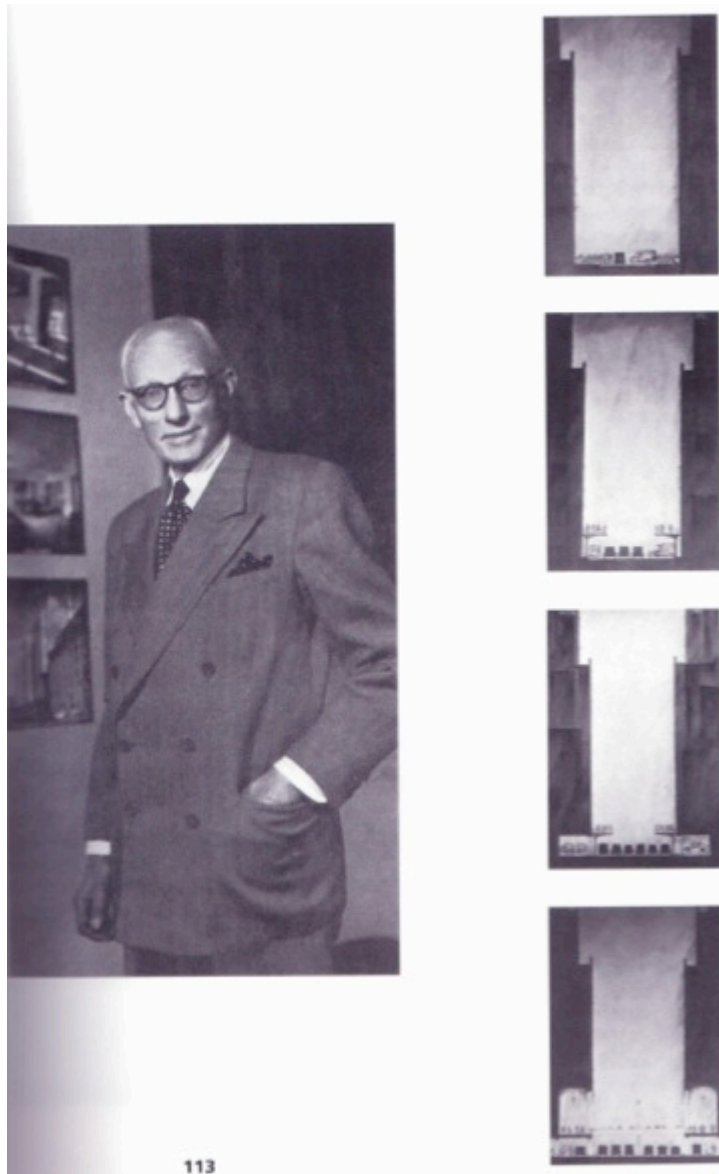
Il Grand Hotel di Gaudì: il ristorante europeo al quinto piano.

Le dimensioni del Grand Hotel di Gaudì a confronto con quelle dell'Empire State Building, del Chrysler Building e della Tour Eiffel.

**Grande Hotel, Gaudì
New York, 1908**



Hugh Ferris



Harvey Wiley Corbett

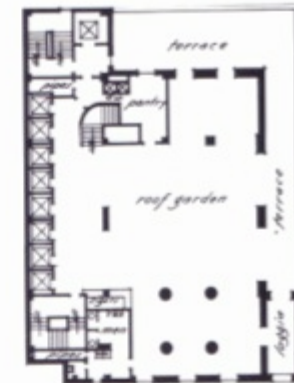
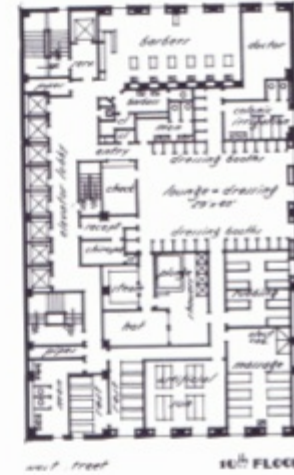
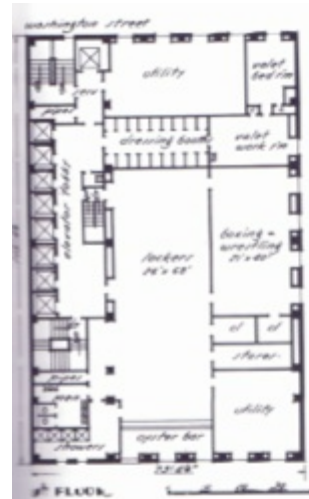
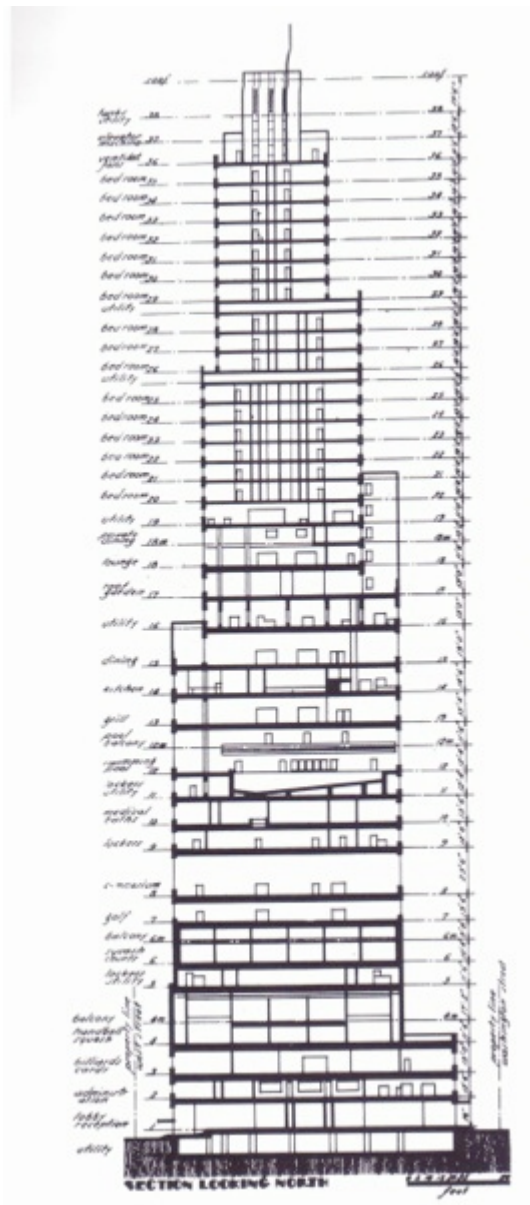
yd
KONIG,
E
STON,
A D
ND



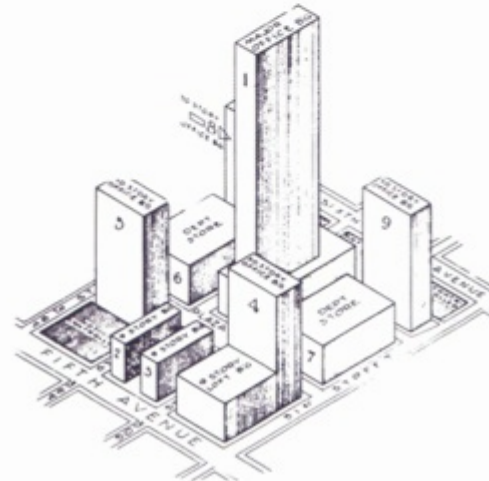
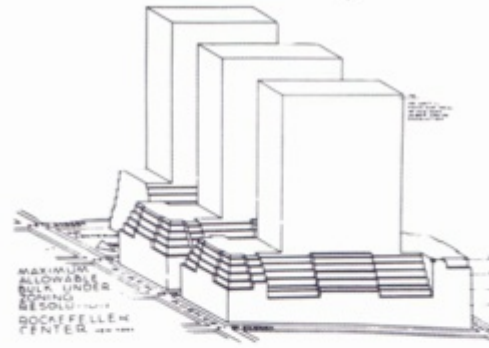
Waldorf-Astoria e Empire State bld (1929)



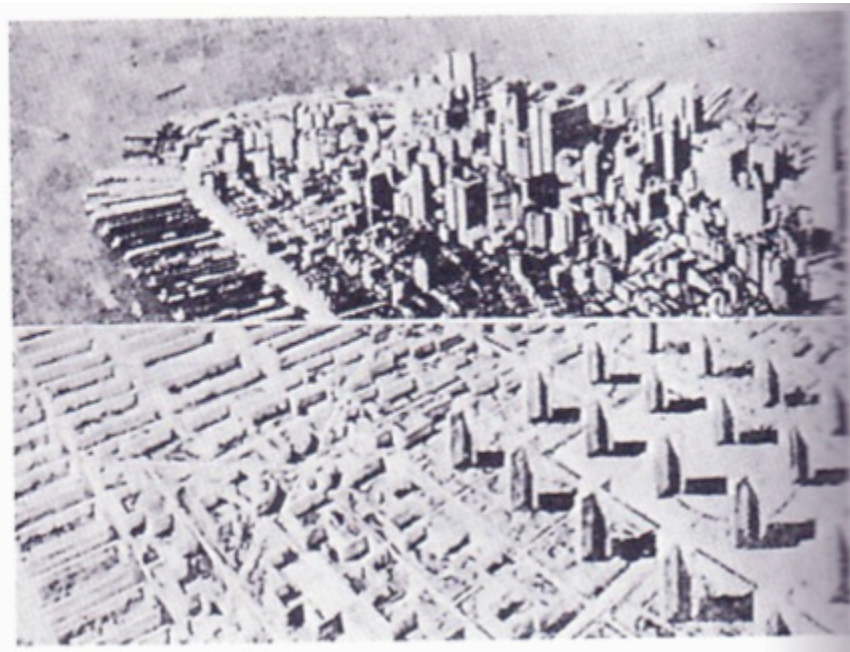
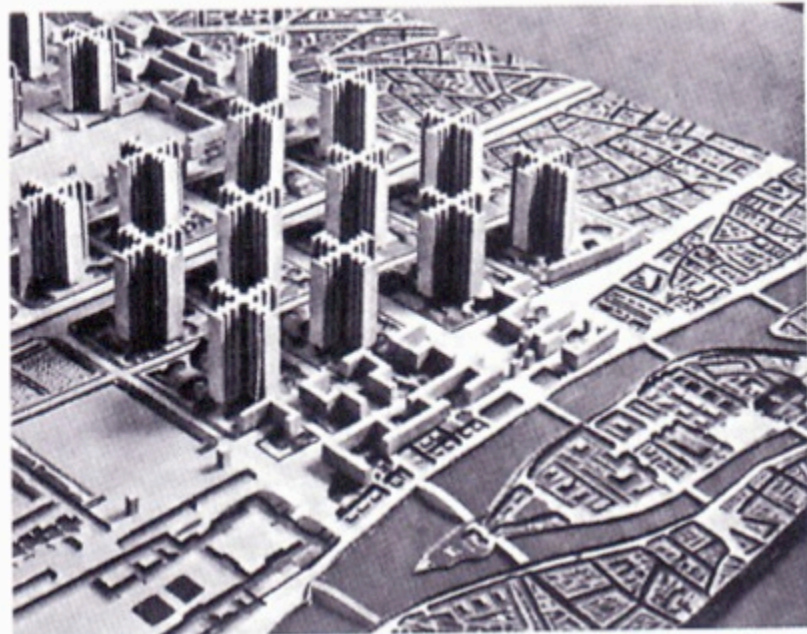
Downtown Athletic Club (1931)



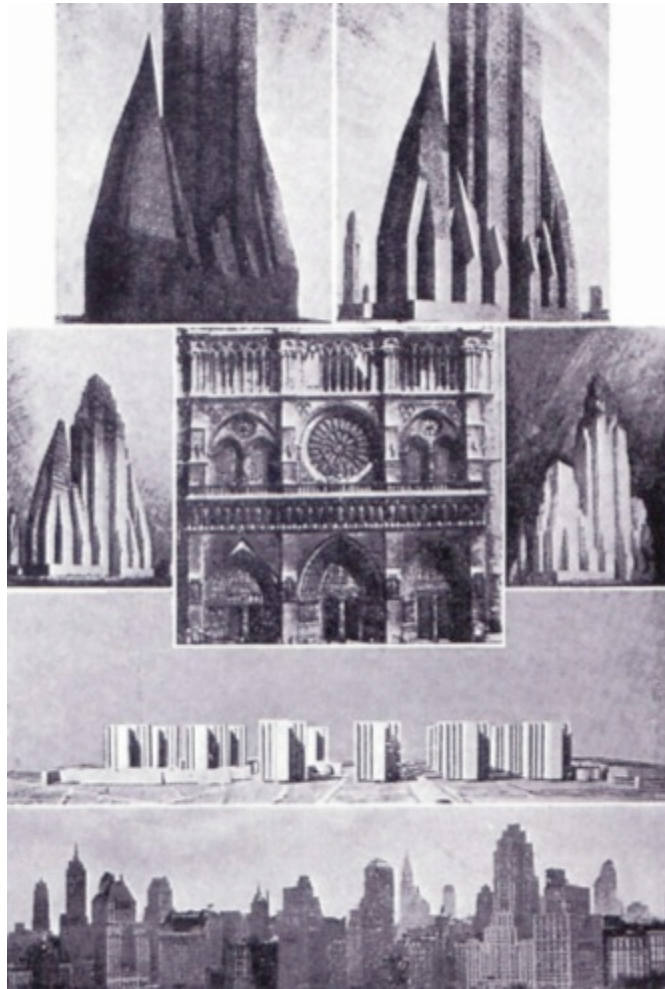
Downtown Athletic Club (1931)



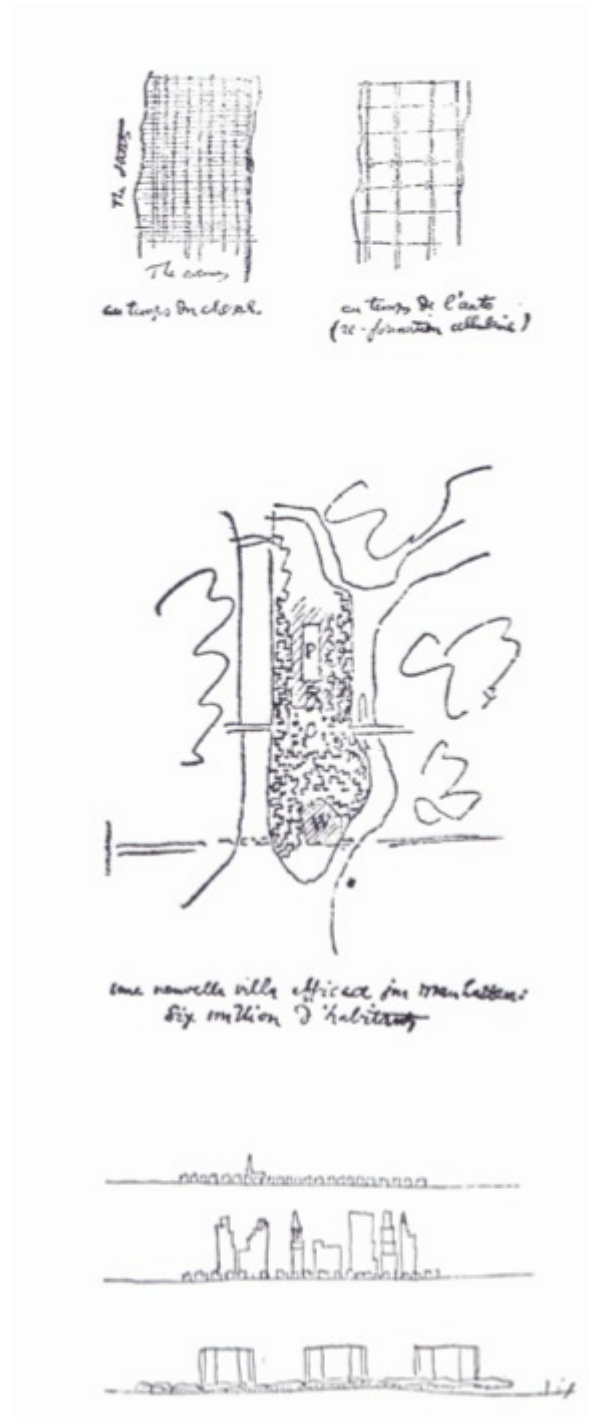
Rockfeller Center (1930-1939)

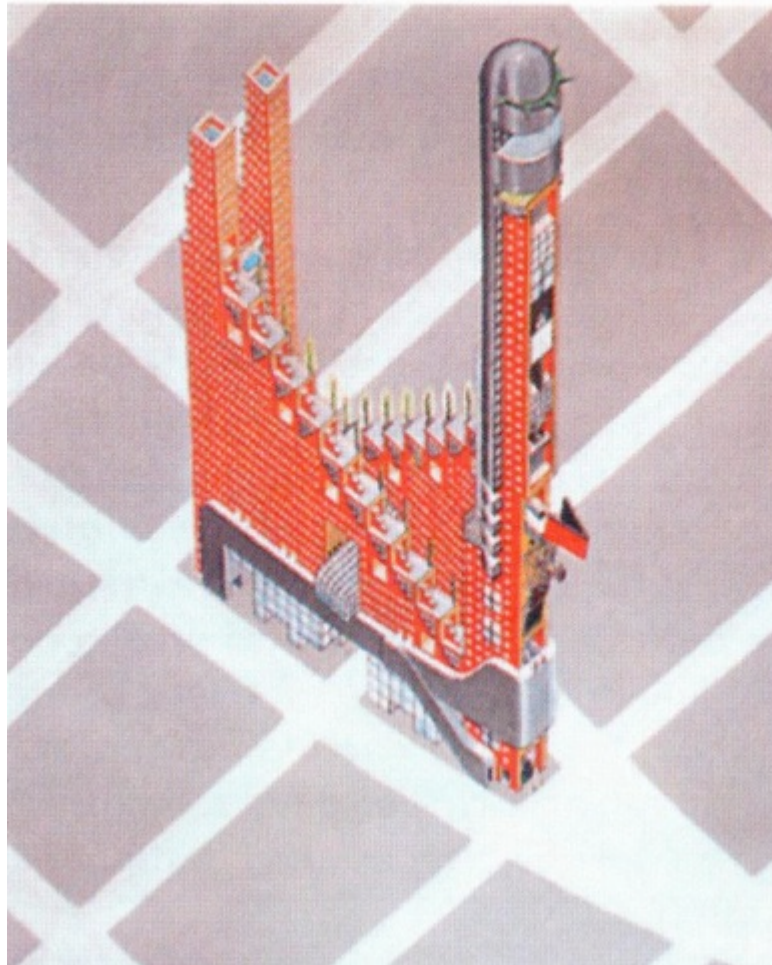


Le Corbusier



Le Corbusier





Hotel Sphinx (1975-1976)