

ARCHITETTURA³

In a contemporary condition of uncontrolled and meaningless proliferation of images, the aim of the round of exhibitions «ARCHITETTURA AL CUBO» is to display - in an intentionally confined space - one single work of some of the leading figures of the international architectural scene. Beyond the final result, what is intended to be shown is the underlying design process, through sketches, plans, pictures and models. The aim of the initiative is to highlight - together with the exemplarity of the selected projects - the possibilities, the hesitations, the choices, thus the labour and the life that stand behind the making of architecture.

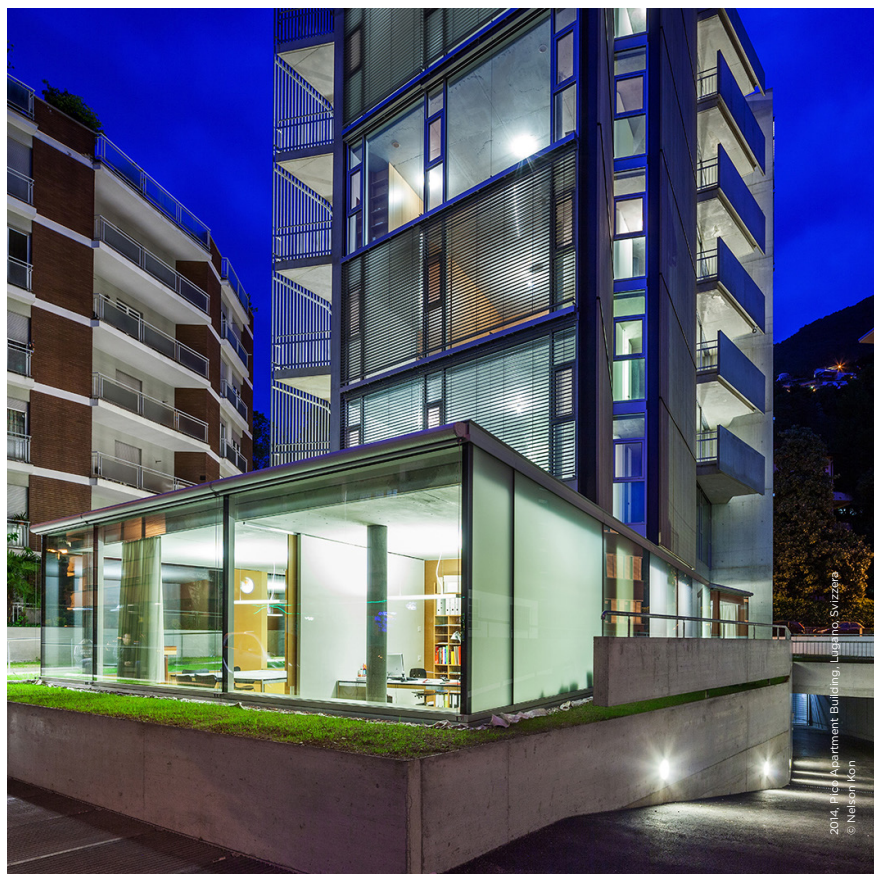
GIZMO

GIZMO is a research collective founded in Milan in 2004 by Marco Biraghi, Gabriella Lo Ricco, Silvia Micheli and Mario Viganò. GIZMO deals with the history and critic of architecture, with a particular interest in the phenomena at the core of contemporary architectural culture and to its developments and transformations. Since its foundation more than 50 people have collaborated with GIZMO, including architects and scholars. Currently part of the collective: Florencia Andreola, Marco Biraghi, Gabriella Lo Ricco, Stefano Passamonti, Giulia Ricci, Stefano Santamato, Mauro Sullam, Riccardo Villa.



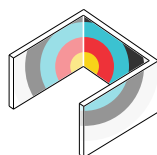
ANGELO BUCCI - SPBR BASERGA MOZZETTI

School of Architecture Urban Planning
Construction Engineering
Via Ampère 2 - Milano

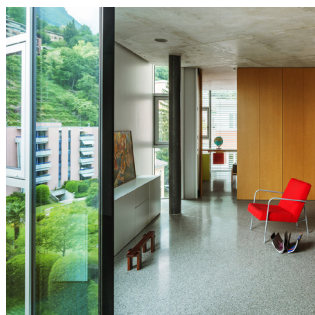
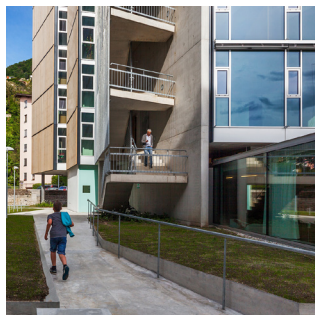
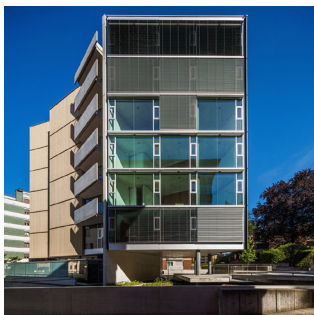


EXHIBITION

3rd - 21st October 2016, "Cubo" space



ARCHITETTURA³



THE EXHIBIT

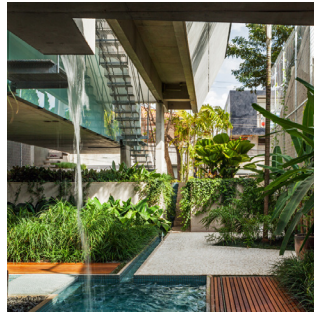
Pico Apartment building in Lugano

The six-floor building has 230 m² per floor and occupies an irregular plot that extends for about 1,000 m². The geometry of the slabs has two centres, which can be seen as two cores of activities. To each of these cores corresponds on the first three floors an average-sized apartment, while on each of the three upper floors the whole area is occupied by a single larger unit. The ground level is an open public passage surrounded by gardens with two different purposes: housing and office. At this level, the housing program is only hinted at by the small abstract prism of the elevator. There are two underground floors: the parking garage and the storage. Each core of the building is supported by a T-shaped concrete wall that bears vertical and horizontal loads, with two columns added for vertical loads. All façade panels, made of wood and glass, were designed to minimise thermal dispersion. Energy efficiency is further improved by a mechanical system of controlled ventilation, independent for each apartment, and by four geothermal probes going 225 m deep.

THE AUTHORS

Angelo Bucci - SPBR Arquitetos

SPBR is a practice established in São Paulo (BR) in 2003. Angelo Bucci graduated at FAU-USP, where he also took his PhD. For over 25 years he has dedicated himself to design, dividing his time between professional and academic duties. SPBR's projects highlight the importance of structural accuracy, construction viability and transparency through the understanding of the urban space.



Baserga Mozzetti Architetti

Baserga Mozzetti is an office founded in Muralto (CH) in 2000 when the two architects, barely 30 years old, won their first competition. N.Baserga graduated at the ETHZ, while C.Mozzetti attended the Scuola Tecnica Superiore of Lugano-Trevano. Both worked for different practices before establishing their own atelier, going on to produce a number of buildings characterised by a rigorous mastery of craft.

